

IS-DG305P Series

5-port Gigabit unmanaged Layer 2 Industrial PoE Switch



The IS-DG305P Series full Gigabit unmanaged 5-port Ethernet Switches with 4 IEEE 802.3af/at PoE ports provide easy to use plug-n-play applications; a full Gigabit network provides higher throughput than legacy Fast Ethernet network. The cost effective IS-DG305P Series unmanaged switches can provide power and transmit data directly through a single Ethernet cable, which is ideal for factory production line or embedded into machine system. The IS-DG305P Series unmanaged switches also support network traffic optimization with useful function by default, such as QoS and storm protection.



Key features

- ▶ 5 / 4 Giga Copper ports with 0 / 1 100/1000 SFP ports
- ▶ Support up to 4 port IEEE 802.3af/at ports (15.4/30Watt)
- ▶ Support 9K Jumbo frames
- ▶ IEEE 802.3x flow control & back-pressure
- ▶ Layer 2 Line-Speed Switching Fabric, non-blocking
- ▶ Support IEEE 802.1p TOS/Diffserv, QoS
- ▶ Multicast / Broadcast / Flooding Storm Control
- ▶ Fan-Less design with wide-temperature range (-40~75°C)
- ▶ Redundant power input (46~57 VDC) & Reverse power protection
- ▶ Support Din-Rail or wall mount installation
- ▶ Support Relay Output Alarm
- ▶ IP 30 Protection
- ▶ 1.5KV Hipot
- ▶ 2KV surge immunity on RJ45 ports

Specification

Ethernet

Operating Mode	Store and Forward, L2 wire-speed/non-blocking switching engine
MAC addresses	2K
Packet Buffer	1 Mbits
Jumbo frame	9K
Backplane / Switching Fabric	10Gbps

RJ45 Copper ports

Speed	10/100/1000 Mbps
MDI/MDIX Auto-crossover	Support straight or cross wired cables
Auto-negotiation/Duplex	10/100/1000 Mbps speed auto-negotiation; Full & Half Duplex
PoE	IEEE 802.3af/at (15.4 Watt / 30 Watt)

Fiber Ports

Port Types supported	100/1000 Base SFP Slot
Fiber port connector	LC/RJ45 connector for fiber ports
Optimal fiber cable	Typical 50 or 62.5/125 μ m for multimode (mm) Typical 8 or 9/125 μ m for single mode (sm)

Protocols & Standards

IEEE 802.3 , IEEE 802.3x, Flow Control, Back Pressure, TCP/UDP, IEEE 802.3af/at

Power

Power Input	Redundant Power Input, Terminal Block
Input Voltage Range	46~57V DC
Reverse power protection	YES
Power Consumption	IS-DG305P-4 3.6 Watt, IS-DG305P-F-4 4.3 Watt (Without PD load) PSE: Max. 4 x 30Watt, 120 W total power budget

Indicators

Power status indication	Power Input status
Ethernet port indication	Link & speed

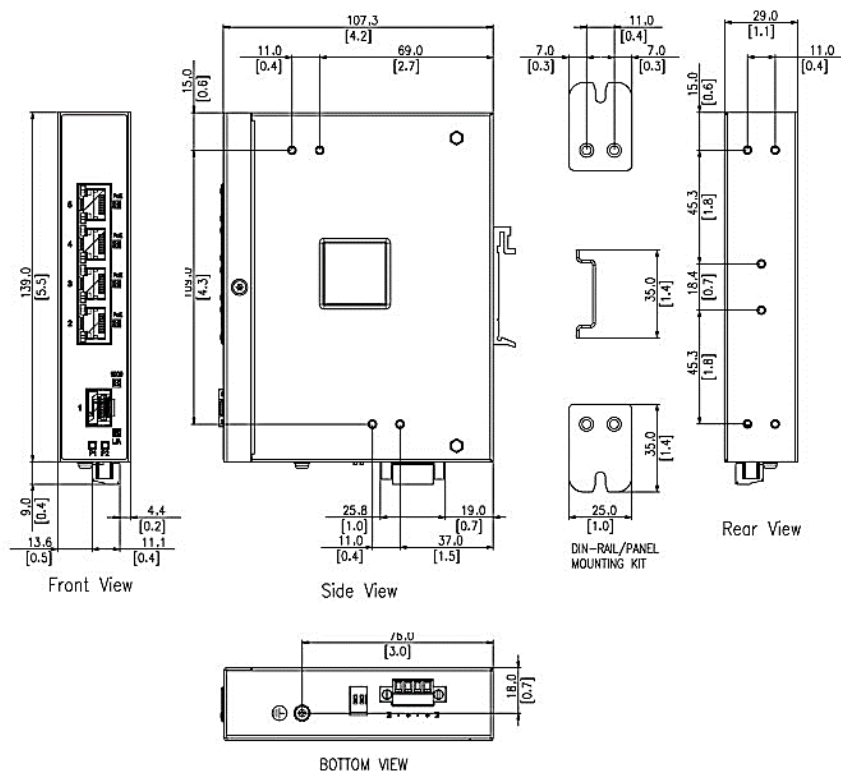
Environmental and Compliances

Operating Temperature	-40~75°C (Cold startup at -40°C)
Storage Temperature	-40~85°C
Humidity	5~95% (Non-Condensing)
Vibration, shock, free fall	IEC-60068-2-6, -27, -32
Certification Compliance	CE, FCC
Electrical safety	CE
EMC	FCC Part 15, CISPR 22 (EN55022) Class A IEC-61000-4-2, -3, -4, -5, -6 (Level 3)
RoHS & WEEE	RoHS (Pb free) and WEEE Compliant
MTBF	>25 years

Mechanical

Protection	IP30
Dimension	112.2mm (H) x 29.1mm (W) x 89.4mm (D) (without DIN rail clip)
Weight	470g
Installation	DIN-Rail mounting; Wall mounting
Relay Output Alarm	1A, 24VDC, Normal Open

Dimension Diagram



Ordering Information

Available Models	Description	10/100/1000Mb TX	100/1000Mb FX
IS-DG305P-F-4	Industrial 5 port Gigabit Layer 2 unmanaged PoE Ethernet Switch, 4 PoE af/at, 1G SFP Slot	4	1
IS-DG305P-4	Industrial 5 port Gigabit Layer 2 unmanaged PoE Ethernet Switch, 4 PoE af/at	5	

Accessories

1. 100 Mb SFP Modules
2. Gigabit SFP Modules
3. IS-RK2U 19" rack mount kit
4. IS-RK4U 19" rack mount kit

Package Checklist

- IS-DG305P Switch
- Quick Installation Guide (Printed)
- Wall Mount kit /Din-Rail kit